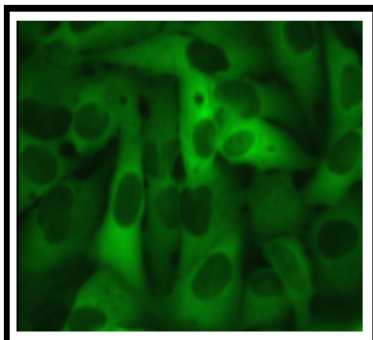


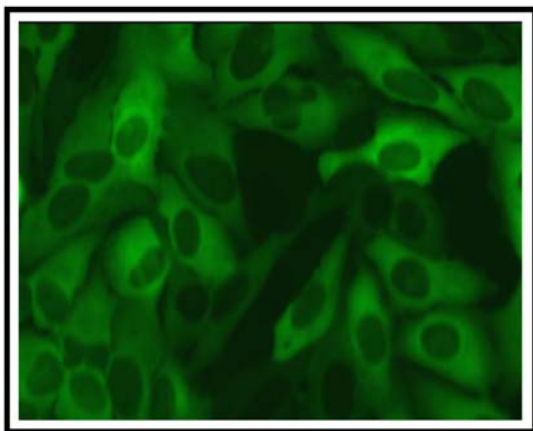
STABLE CELL LINES FOR RESEARCH

- GREEN FLUORESCENT PROFILIN1 U2OS CELL LINE -



Product Name:	tGFP-Profilin1 Cell line
Catalog Number:	P30714
Cell Line:	U2OS
Fluorescent Protein:	tGFP
Resistance:	Puromycin
Format:	>3x10 ⁶ cells in Cryopreserved vials
Storage:	Liquid Nitrogen

A novel green fluorescent U2OS cell line has been developed through stable transfection with tGFP-Profilin1.



tGFP-Profilin1 cell line is stably-transfected and it is ready to use in cell-based assay applications. This stably transfected cell line provides consistent levels of expression, which helps to simplify the interpretation of the results. This cell line is intended to be used as an “in vitro” model for research studies.

About Profilin1 protein

Profilin1 is a protein recently related with familial amyotrophic lateral sclerosis.

Amyotrophic lateral sclerosis (ALS) is a degenerative disease (motoneuron disease) that hits neurons in charge of the voluntary muscles. Eventually, ALS worsens the capacity to control the muscles needed to move, speak, eat or breathe. Still it haven't been found a cure and in the end leads to death.

There are two types of ALS predominantly: sporadic and familial, is in the familial type that Profilin1 is involved.

Use Restriction This product contains a proprietary nucleic acid coding for a proprietary fluorescent protein intended to be used for research purposes only. No rights are conveyed to modify or clone the gene encoding fluorescent protein contained in this product, or to use the gene or protein other than for non-commercial research, including use for validation or screening compounds. For information on commercial licensing, contact Licensing Department, Evrogen JSC, email: license@evrogen.com.

About tGFP protein

tGFP is an improved variant of the green fluorescent protein CopGFP cloned from copepoda *Pontellina plumata* (Arthropoda; Crustacea; Maxillopoda; Copepoda). It possesses bright green fluorescence (excitation/ emission max = 482/ 502 nm) that is visible earlier than fluorescence of other green fluorescent proteins. TurboGFP is mainly intended for applications where fast appearance of bright fluorescence is crucial. It is specially recommended for cell and organelle labeling and tracking the promoter activity.

Quality Control

All cells are performance assayed and test negative for mycoplasma, bacteria, yeast and fungi. Cell viability, morphology and proliferative capacity are measured after recovery from cryopreservation. Innoprot guarantees stable expression for many generations and provides support for cell culture and visualization.

THIS PRODUCT IS FOR RESEARCH PURPOSES ONLY. It is not to be used for drug or diagnostic purposes, nor is it intended for human use. Innoprot products may not be resold, modified for resale, or used to manufacture commercial products without written approval of Innovative Technologies in Biological Systems, S.L.