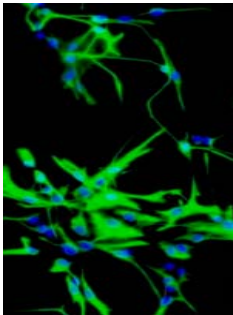


NEUROSCIENCES INNOPROFILE™ RAT HIPPOCAMPAL ASTROCYTES




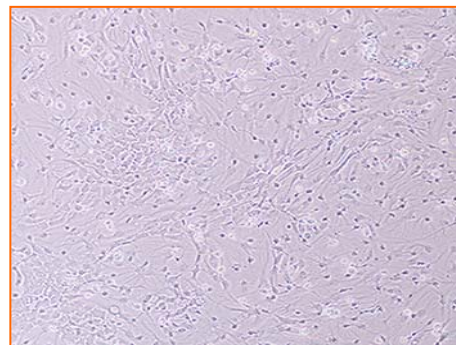
Product Type:	Hippocampal Astrocytes
Catalog Number:	P10203
Source:	2 Days Sprague/Dawley Rat Brains
Number of Cells:	1 x 10 ⁶ Astrocytes / vial (1ml)
Storage:	Liquid Nitrogen

Rat Astrocytes (RA) from Innoprot are isolated from 2 days rat brain. RA are cryopreserved at passage one and delivered frozen. Each vial contains > 1 x 10⁶ cells in 1 ml volume. RA are characterized by immunofluorescent method with antibody to GFAP. RA are negative for mycoplasma, bacteria, yeast and fungi. RA are guaranteed to further expand for 15 population doublings in the conditions provided by Innoprot.

Astrocytes make up the majority of the cells in the mammalian brain. They are the most variable in type, most intimately associated with all parts of neurons, and thus most functionally interesting in their relationships with neurons. They provide structural, trophic, and metabolic support to neurons and modulate synaptic activity. Astrocytes have been implicated in the pathological processes of many neurological diseases. Long-term recovery after brain injury, through neurite outgrowth, synaptic plasticity, or neuron regeneration, is influenced by astrocyte surface molecule expression and trophic factor release.

Recommended Medium

-  Astrocyte Medium
(Reference: P60101)



Product Characterization

Immunofluorescent method

- GFAP

The cells test negative for HIV-1, HBV, HCV, mycoplasma, bacteria, yeast and fungi

Product Use

THESE PRODUCTS ARE FOR RESEARCH USE ONLY. Not approved for human or veterinary use, for application to humans or animals, or for use in vitro diagnostic or clinical procedures

INSTRUCTIONS FOR CULTURING CELLS

IMPORTANT: Cryopreserved cells are very delicate. Thaw the vial in a 37 °C waterbath and return them to culture as quickly as possible with minimal handling!

Unpacking:

1. For cryopreserved cells: If there is dry ice in the package and you are not going to culture cells right way, place cryovial(s) immediately into liquid nitrogen.
2. For proliferating cells: Spray the culture vessel (flask, plate or slide) with 70% ethanol for disinfection. Transfer the cells into 37°C, 5% CO₂ incubator and allow equilibrating for 2 hours. After cells have equilibrated, remove shipping medium from the culture vessel and replace with fresh medium.
4. Place the vial in a 37°C waterbath, hold and rotate the vial gently until the contents are completely thawed. Remove the vial from the waterbath immediately, wipe it dry, rinse the vial with 70% ethanol and transfer it to a sterile field. Remove the cap, being careful not to touch the interior threads with fingers. Using a 1 ml eppendorf pipette gently re-suspend the contents of the vial.

Set up culture after receiving the order:

1. Prepare a poly-L-lysine coated flask (2 µg/cm², T-75 flask is recommended). Add 10 ml of sterile water to a T-75 flask and then add 150 µl of poly-L-lysine stock solution (1 mg/ml, Innoprot cat. no. PLL). Leave the flask in incubator overnight (minimum one hour at 37°C incubator).
2. Prepare complete medium: decontaminate the external surfaces of medium and medium supplements with 70% ethanol and transfer them to sterile field. Aseptically open each supplement tube and add them to the basal medium with a pipette. Rinse each tube with medium to recover the entire volume.
3. Rinse the poly-L-lysine coated flask with sterile water twice and add 20 ml of complete medium to the flask. Leave the flask in the hood and go to thaw the cells.
5. Dispense the contents of the vial into the equilibrated, poly-L-lysine coated culture vessels. A seeding density of 5,000 cells/cm² is recommended.
Note: Dilution and centrifugation of cells after thawing are not recommended since these actions are more harmful to the cells than the effect of DMSO residue in the culture. It is also important that astrocytes are plated in poly-L-lysine coated flask that promotes cell attachment and growth.
6. Replace the cap or cover, and gently rock the vessel to distribute the cells evenly. Loosen cap if necessary to permit gas exchange.
7. Return the culture vessels to the incubator.
8. For best result, do not disturb the culture for at least 16 hours after the culture has been initiated. Change the growth medium the next day to remove the residual DMSO and unattached cells, then every other day thereafter. A healthy culture will display polygonal shaped, sheets of contiguous cells and the cell number will be double after two to three days in culture.

Maintenance of Culture:

1. Change the medium to fresh supplemented medium the next morning after establishing a culture from cryopreserved cells.
2. Change the medium every three days thereafter, until the culture is approximately 70% confluent.
3. Once the culture reaches 70% confluence, change medium every other day until the culture is approximately 90% confluent.

Subculture:

1. Subculture the cells when they are over 90% confluent.
2. Prepare poly-L-lysine coated cell culture flasks (2 µg/cm²).
3. Warm medium, trypsin/EDTA solution (T/E), trypsin neutralization solution (TNS), and DPBS (Ca⁺⁺ and Mg⁺⁺ free) to room temperature. We do not recommend warming the reagents and medium at 37°C waterbath prior to use.

Note: DPBS, trypsin/EDTA solution & trypsin neutralization solution are included in the "Primary Cells Detach Kit provided by Innoprot (Cat. N° P60305).

4. Rinse the cells with DPBS.
5. Add 8 ml of DPBS first and then 2 ml of trypsin/EDTA solution into flask (in the case of T-75 flask); gently rock the flask to make sure cells are covered by trypsin/EDTA solution; incubate the flask at 37°C incubator for 2 minutes or until cells are completely rounded up (monitored with inverted microscope). During incubation, prepare a 50 ml conical centrifuge tube with 5 ml of fetal bovine serum (FBS); transfer

trypsin/EDTA solution from the flask to the 50 ml centrifuge tube (a few percent of cells may detached); continue incubate the flask at 37°C for 1 or 2 minutes more (no solution in the flask at this moment); at the end of trypsinisation, one hand hold one side of flask and the other hand gently tap the other side of the flask to detach cells from attachment; check the flask under inverted microscope to make sure all cells are detached, add 5 ml of trypsin neutralization solution to the flask and transfer detached cells to the 50 ml centrifuge tube; add another 5 ml of TNS to harvest the residue cells and transfer it to the 50 ml centrifuge tube. Examine the flask under inverted microscope to make sure the cell harvesting is successful by looking at the number of cells left behind. There should be less than 5%.

6. Centrifuge the 50 ml centrifuge tube (harvested cell suspension) at 1000 rpm (Beckman Coulter Allegra 6R centrifuge or similar) for 5 min; re-suspend cells in growth medium.
7. Count cells and plate cells in a new, poly-L-lysine coated flask with cell density as recommended.

Caution: Handling animal derived products is potentially biohazardous. Although each cell strain testes negative for microbial, diagnostic tests are not necessarily 100% accurate, therefore, proper precautions must be taken to avoid inadvertent exposure. Always wear gloves and safety glasses when working these materials. Never mouth pipette. We recommend following the universal procedures for handling products of human origin as the minimum precaution against contamination [1].

- [1]. Grizzle, W. E., and Polt, S. S. (1988) Guidelines to avoid personal contamination by infective agents in research laboratories that use human tissues. *J Tissue Culture Methods*. 11(4).