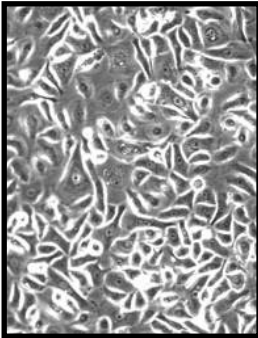


DERMAL SYSTEM INNOPROFILE™
HUMAN EPIDERMAL KERATINOCYTES



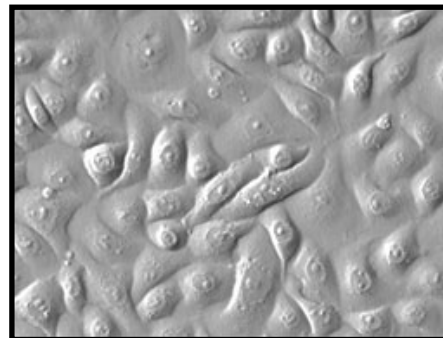
Product Type:	Cryo-preserved Epidermal Keratinocytes
Catalog Number:	P10851 – Epidermal Keratinocytes - neonate P10852 – Epidermal Keratinocytes - adult
Source:	Human Epidermal Tissue
Number of Cells:	5 x 10 ⁵ Cells / vial (1ml)
Storage:	Liquid Nitrogen

Human Epidermal Keratinocytes (HEK) provided by Innoprot are isolated from human epidermal tissue. HEK are cryopreserved on primary culture and delivered frozen. HEK are guaranteed to further expand for 15 population doublings in the condition provided in the technical sheet.

The major cell type in epithelial layer is keratinocytes which consists around 85% of living epidermal cells. Keratinocytes are the cells of stratified squamous epithelia. Keratinocyte divide and are thus generated in the basal layer of the epidermis; this division is followed by a programmed death as they produce keratin and move up to the surface of the epidermis. Keratinocyte proliferation, differentiation, & apoptosis are a complex and carefully choreographed process. Keratinocyte also plays a central role in tissue homeostasis, wound healing, cancers, and skin-based gene-therapy. Human keratinocytes express adhesion molecules and cytokines indicating their participation in skin innate immunity and homeostasis in vivo.

 **Recommended Medium**

- Keratinocyte Medium (serum-free)
(Reference: P60154)



 **Product Characterization**

Immunofluorescent method

- Cytokeratin-18
- Cytokeratin-19

The cells test negative for HIV-1, HBV, HCV, mycoplasma, bacteria, yeast and fungi

 **Product Use**

THESE PRODUCTS ARE FOR RESEARCH USE ONLY. Not approved for human or veterinary use, for application to humans or animals, or for use in vitro diagnostic or clinical procedures

INSTRUCTIONS FOR CULTURING CELLS

IMPORTANT: Cryopreserved cells are very delicate. Thaw the vial in a 37 °C waterbath and return them to culture as quickly as possible with minimal handling!

Set up culture after receiving the order:

1. Prepare a poly-L-lysine coated flask (2 $\mu\text{g}/\text{cm}^2$, T-75 flask is recommended). Add 10 ml of sterile water to a T-75 flask and then add 15 μl of poly-L-lysine stock solution (10 mg/ml). Leave flask in incubator overnight (minimum one hour at 37°C incubator).
2. Prepare complete medium: decontaminate the external surfaces of medium and medium supplements with 70% ethanol and transfer them to sterile field. Aseptically open each supplement tube and add them to the basal medium with a pipette. Rinse each tube with medium to recover the entire volume.
3. Rinse the poly-L-lysine coated flask with sterile water twice and add 15 ml of complete medium to the flask. Leave the flask in the hood and go to thaw the cells.
4. Place the vial in a 37°C waterbath, hold and rotate the vial gently until the contents are completely thawed. Remove the vial from the waterbath immediately, wipe it dry, rinse the vial with 70% ethanol and transfer it to a sterile field. Remove the cap, being careful not to touch the interior threads with fingers. Using a 1 ml eppendorf pipette gently resuspend the contents of the vial.
5. Dispense the contents of the vial into the equilibrated, poly-L-lysine coated culture vessels. A seeding density higher than 5,000 cells/ cm^2 is recommended.

Note: Dilution and centrifugation of cells after thawing are not recommended since these actions are more harmful to the cells than the effect of DMSO residue in the culture. It is also important that keratinocytes are plated in poly-L-lysine coated culture vessels that promote cell attachment.

6. Replace the cap or cover of flask, and gently rock the vessel to distribute the cells evenly. Loosen cap if necessary to permit gas exchange.
7. Return the culture vessels to the incubator.
8. For best results, do not disturb the culture for at least 16 hours after the culture has been initiated. Refresh culture medium the next day to remove residual DMSO and unattached cells, then every other day thereafter.

Maintenance of Culture:

1. Refresh supplemented culture medium the next morning after establishing a culture from cryopreserved cells.
2. Change the medium every other day thereafter, until the culture is approximately 50% confluent.
3. Once the culture reaches 50% confluence, change medium every day until the culture is approximately 80% confluent.

Subculture:

1. Subculture the cells when they are over 80% confluent.
2. Prepare poly-L-lysine coated cell culture flasks ($2 \mu\text{g}/\text{cm}^2$) one day before subculture.
3. Warm medium, trypsin/EDTA solution, trypsin neutralization solution, and DPBS to room temperature. We do not recommend warming the reagents and medium at 37°C waterbath prior to use.
4. Rinse the cells with DPBS.
5. Add 8 ml of DPBS and then 2 ml of T/E solution into flask (in the case of a T-75 flask). Gently rock the flask to ensure complete coverage of cells by T/E solution. Incubate the flask in a 37°C incubator for 1 to 2 minutes or until cells completely round up. Use a microscope to monitor the change in cell morphology.
6. During incubation, prepare a 50 ml conical centrifuge tube with 5 ml of fetal bovine serum.
7. Transfer T/E solution from the flask to the 50 ml centrifuge tube (a small percent of cells may detach) and continue to incubate the flask at 37°C for another 1 to 2 minutes (no solution in the flask at this moment).
8. At the end of incubation, gently tap the side of the flask to dislodge cells from the surface. Check under a microscope to make sure that all cells detach.
9. Add 5 ml of TNS solution to the flask and transfer detached cells to the 50 ml centrifuge tube. Rinse the flask with another 5 ml of TNS to collect the residual cells.
10. Examine the flask under a microscope for a successful cell harvest by looking at the number of cells being left behind; there should be less than 5%
11. Centrifuge the 50 ml centrifuge tube at 1000 rpm for 5 minutes. Resuspend cells in culture medium.
12. Count and plate cells in a new poly-L-lysine-coated culture vessel with the recommended cell density.

Caution: Handling human derived products is potentially biohazardous. Although each cell strain testes negative for HIV, HBV and HCV DNA, diagnostic tests are not necessarily 100% accurate, therefore, proper precautions must be taken to avoid inadvertent exposure. Always wear gloves and safety glasses when working these materials. Never mouth pipette. We recommend following the universal procedures for handling products of human origin as the minimum precaution against contamination [1].

- [1]. Grizzle, W. E., and Polt, S. S. (1988) Guidelines to avoid personal contamination by infective agents in research laboratories that use human tissues. *J Tissue Culture Methods*. 11(4).